

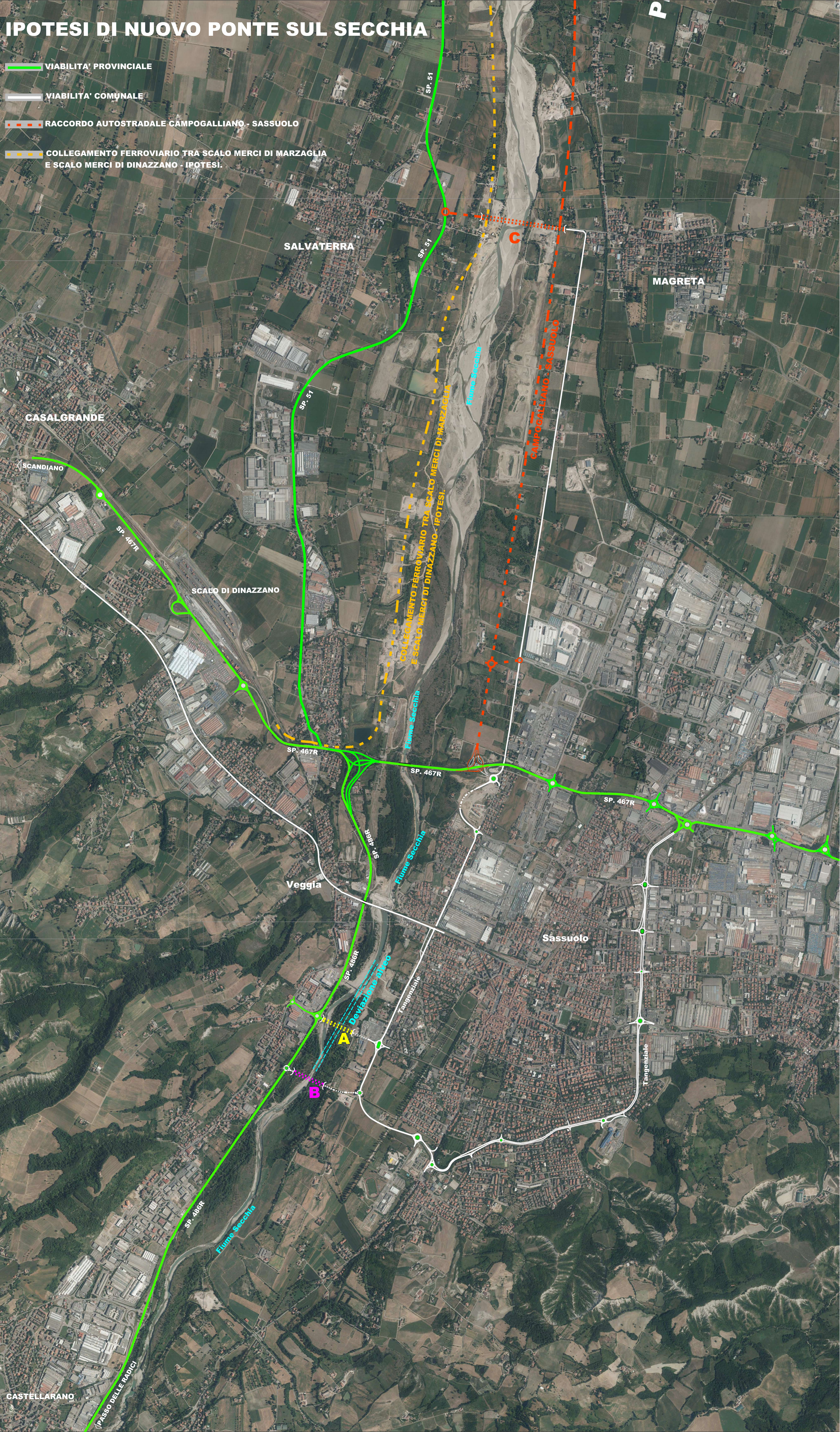
# IPOTESI DI NUOVO PONTE SUL SECCHIA

VIABILITA' PROVINCIALE

VIABILITA' COMUNALE

RACCORDO AUTOSTRADALE CAMPOGALLIANO - SASSUOLO

COLLEGAMENTO FERROVIARIO TRA SCALO MERCI DI MARZAGLIA E SCALO MERCI DI DINAZZANO - IPOTESI



SALVATERRA

MAGRETA

CASALGRANDE

SCALO DI DINAZZANO

Veggia

Sassuolo

CASTELLARANO

PASSO DELLE RADICI

Fiume Secchia

Fiume Secchia

Fiume Secchia

Fiume Secchia

Deviazione atico

Tangenziale

Tangenziale

CAMPOGALLIANO SASSUOLO

COLLEGAMENTO FERROVIARIO TRA SCALO MERCI DI MARZAGLIA E SCALO MERCI DI DINAZZANO - IPOTESI

SP. 51

SP. 51

SP. 51

SP. 51

SP. 51

SP. 51

SP. 51

SP. 51

SP. 51

SP. 51

SP. 51

SP. 51

SP. 51

SP. 51

SP. 51

SP. 51

SP. 51

SP. 51

SP. 51

SP. 51

SP. 51

SP. 51

SP. 51

SP. 51

SP. 51

SP. 51

SP. 51

SP. 51

SP. 51

SP. 51

SP. 51

SP. 51

SP. 51

SP. 51

SP. 51

SP. 51

SP. 51

SP. 467R

SP. 467R

SP. 467R

SP. 467R

SP. 467R

SP. 467R

SP. 467R

SP. 467R

SP. 467R

SP. 467R

SP. 467R

SP. 467R

SP. 467R

SP. 467R

SP. 467R

SP. 467R

SP. 467R

SP. 467R

SP. 467R

SP. 467R

SP. 467R

SP. 467R

SP. 467R

SP. 467R

SP. 467R

SP. 467R

SP. 467R

SP. 467R

SP. 467R

SP. 467R

SP. 467R

SP. 467R

SP. 468R

SP. 468R

SP. 468R

SP. 468R

SP. 468R

SP. 468R

SP. 468R

SP. 468R

SP. 468R

SP. 468R

SP. 468R

SP. 468R

SP. 468R

SP. 468R

SP. 468R

SP. 468R

SP. 468R

SP. 468R

SP. 468R

SP. 468R

SP. 468R

SP. 468R

SP. 51

SP. 51

SP. 51

SP. 51

SP. 51

SP. 51

SP. 51

SP. 51

SP. 51

SP. 51

SP. 51

SP. 51

SP. 51

SP. 51

SP. 51

SP. 51

SP. 51

SP. 51

SP. 51

SP. 51

SP. 51

SP. 51

SP. 51

SP. 51

SP. 51

SP. 51

SP. 51

SP. 51

SP. 51

SP. 51

SP. 51

SP. 51

SP. 51

SP. 51

SP. 51

SP. 51

SP. 51

SP. 51

SP. 51

SP. 51

SP. 51

SP. 51

SP. 51

SP. 51

SP. 51

SP. 51

SP. 51

SP. 51

P